

What to Know About a Right Heart Catheterization

As you learn more about PH-ILD, you might hear about a Right Heart Catheterization procedure (often referred to as a Right Heart Cath). Reading this information will give you a very basic understanding of what a Right Heart Cath is and how it can be used to diagnose PH.

Remember to discuss your questions with your healthcare team and refer to this information as needed.

What is a Right Heart Cath?

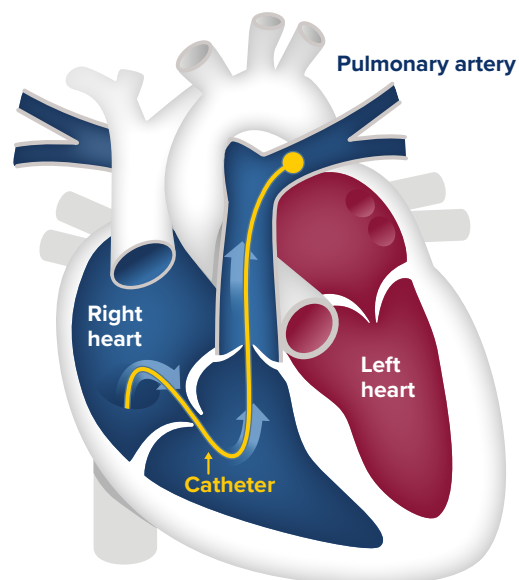
The Right Heart Cath procedure measures the pressures in your heart and the blood vessels of your lungs. This helps your healthcare team understand how well your heart and lungs are working.

The information that a Right Heart Cath provides can be used to diagnose certain types of heart and lung diseases. In addition, a Right Heart Cath is used to track changes and monitor these diseases over time.

What information does a Right Heart Cath provide?

A Right Heart Cath procedure measures pressures inside your right heart and pulmonary artery (the main blood vessel in your lungs).

The results give your healthcare team important information about the condition of your heart and lungs. Keep in mind that your results can change over time, so your healthcare team may recommend one or more Right Heart Caths in the future.

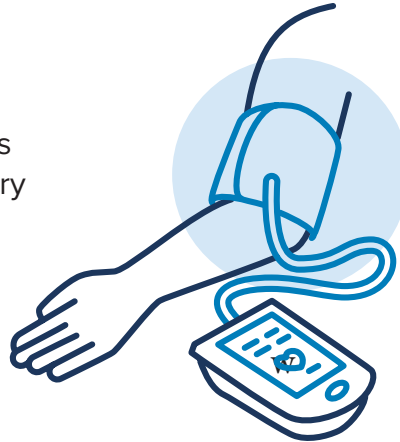


How is a Right Heart Cath different from a blood pressure measurement?

Think of a Right Heart Cath as a type of blood pressure measuring system.

You're probably familiar with having your systemic (ie, whole body) blood pressure taken with a cuff around your arm. When the cuff inflates, it squeezes the artery in your arm and measures the blood pressure inside it. Since it's not possible to put a cuff around your pulmonary artery or your heart, your healthcare team will measure the pressure from inside your body with a Right Heart Cath procedure. It's also important to know that the pressures measured from a Right Heart Cath should be much lower than the ones that you typically see from a systemic blood pressure reading.

To get a more in-depth and accurate measure of the pressure in your heart and lungs, your HCP will use a Right Heart Cath. It's kind of like a suspicious mole: Your healthcare team can tell just by looking that the mole may not be normal, but they need to study the cells *inside* of the mole before they know whether it's something to be concerned about.

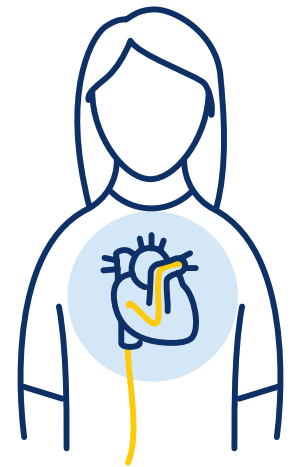


Systemic blood pressure is measured from outside the body

Normal systemic blood pressure:
Less than 120/80 mm Hg

Heart and lung blood pressures are measured from inside the body

Normal pulmonary artery pressure:
14 mm Hg



What are the risks of a Right Heart Cath?

A Right Heart Cath is a generally safe procedure. As with any procedure, a Right Heart Cath does come with risks.

Some potential risks of a Right Heart Cath include bruising where the catheter was placed, along with bleeding and injury to the vein.

On very rare occasions, other complications may occur. Your healthcare team will review all the risks with you before the procedure. If you have any questions or concerns, be sure to talk with your healthcare team about them.



It's important to monitor for PH for early detection. Follow the QR code to find resources you can use to work with your healthcare team.